

# FREMADA

P R E S E N T S

Gold Filled Strength.  
Solid Gold Styles.



# The Gold Filled Difference

## **SOLID GOLD**

10k-24k Throughout



## **GOLD FILLED**

~5% by weight (1/20 14K)



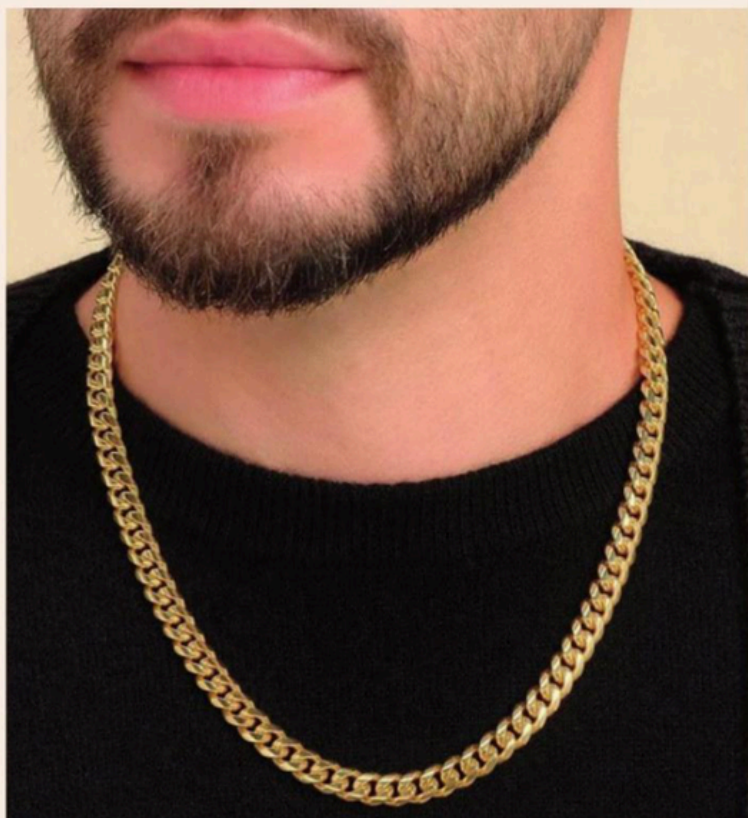
## **GOLD PLATED**

Unregulated Thin Layer



# What is Gold Filled Jewelry?

Gold Filled is the only solid gold alternative with a U.S hallmark stamp designation. Stamped 1/20 14K, it assures a standard of gold equal to 5% of the weight of the jewelry piece. Durability, color stability, and intrinsic value are guaranteed.





# Affordable Luxury

Our Gold Filled Collection allows your customers to access the luxury of solid gold at a price they can more easily afford. With gold prices reshaping buyer behavior, be sure not to miss out on this opportunity to meet the customer where they are, offering them both resale and melt value.

# The Market Edge

A thick layer of solid gold mechanically bonded to base metal, genuine gold filled jewelry is 50-100x thicker than standard plating, allowing it to stand up to more wear and tear, and keep its color for up to 30 years.



# Let's Shine Together

Backed by over 40 years of expertise, Fremada's Gold Filled Collection combines heritage craftsmanship with modern market insight to deliver exceptional value and reliability.

